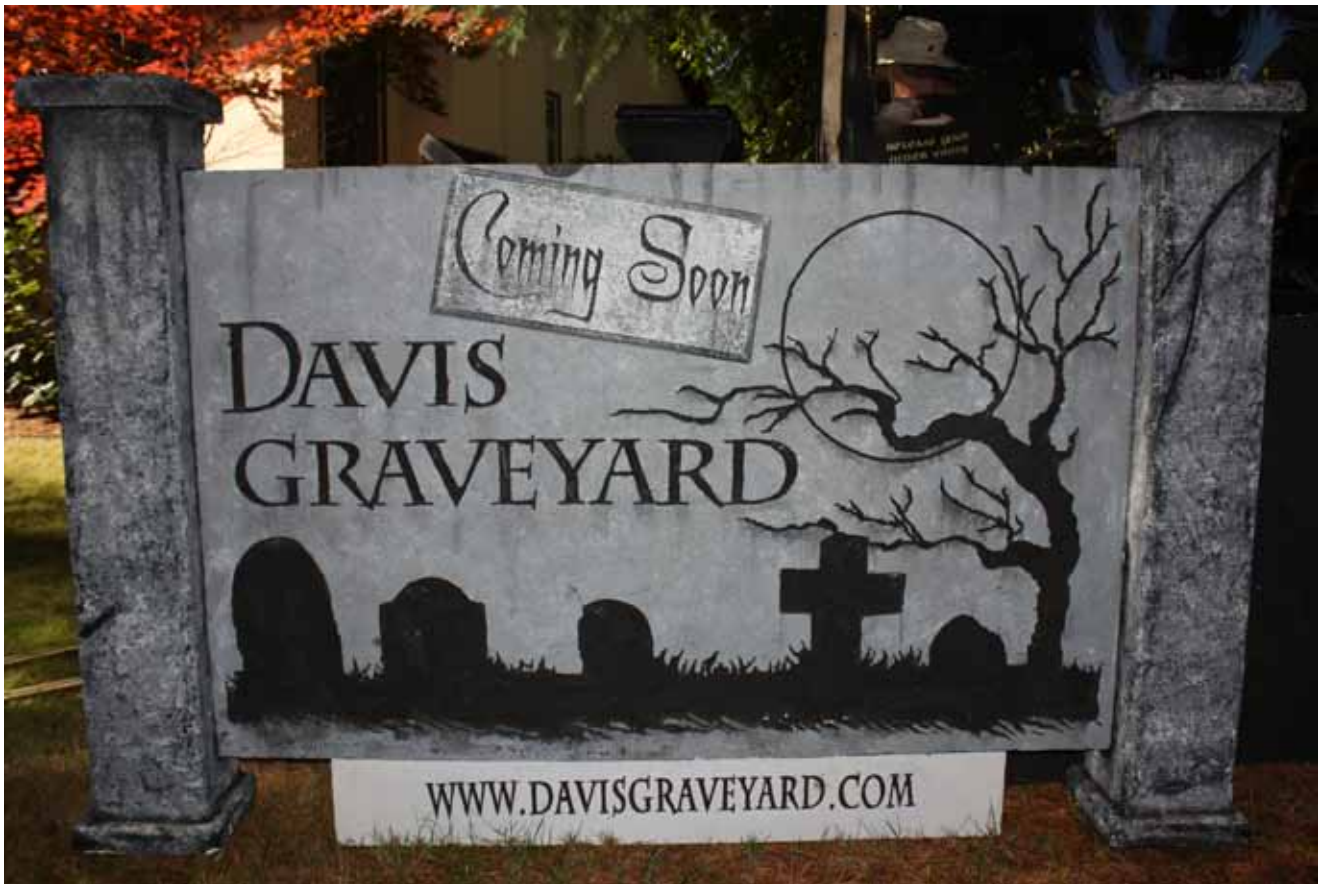


DAVIS GRAVEYARD

HAuNTcon 2012

Foam Texturing





Foam Texturing Techniques

The must have for any graveyard.

Supplies

You are going to need:

- ◆ Polystyrene insulation
- ◆ Black latex house Paint
- ◆ Dark gray latex house paint
- ◆ Light gray latex house paint
- ◆ Various sizes of paint brush
- ◆ Sea Sponge
- ◆ Black marking pen
- ◆ Wire Pads
- ◆ Wire Brushes
- ◆ Scrub Pads
- ◆ Rulers/Tape Measure

Tools

- ◆ Hot Knife
- ◆ Hotwire Foam Factory Hot Knife
- ◆ Dremel Tools
- ◆ Heatgun
- ◆ Custom Tools





Creating Cinder Block

basics

1. Start with sheets of Pink Extruded Foam.
2. Draw out the 8'x16' block pattern. Cinderblock rectangles overlap in the middle of each row.
3. Dremel out the grout lines with a Dremel Trio, circular saw or Dremel Polishing Tip.



4. Pound the entire surface evenly with a stiff wire brush to create the pock marks. Do not gauge or scrape.
5. Clear excess foam from the grout lines using a stiff bristle brush or air compressor nozzle.

6. Use a heatgun to open up the grout lines and pock marks, taking care not to burn or overheat the foam. This will also create a hard finished surface.
7. Paint the surface.

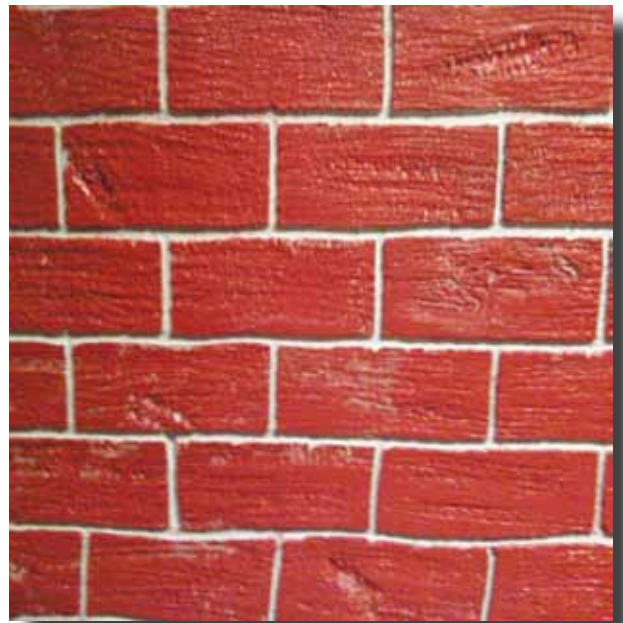
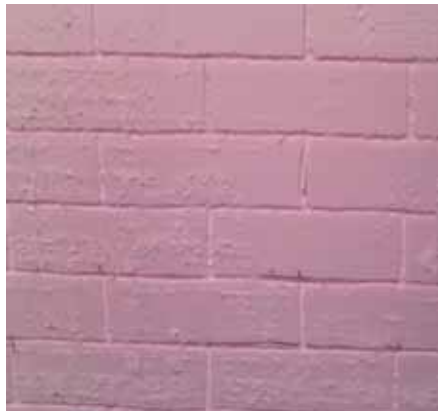




Creating Brick

basics

1. Start with sheets of Pink Extruded Foam.
2. Draw out the 8'x4' block pattern. Brick rectangles overlap in the middle of each row.
3. Dremel out the grout lines with a Dremel Trio, circular saw or Dremel Polishing Tip.
4. Rough up the surface with a wire brush using horizontal strokes.
5. Clear excess foam from the grout lines using a stiff bristle brush or air compressor nozzle.
6. Use a heatgun to open up the grout lines and scuff marks, taking care not to burn or overheat the foam. This will also create a hard finished surface.



7. Paint a base coat of a light mortar color.
8. Roller on brick red.
9. Age with watered down black paint.





Creating Stone

basics

1. Start with white polystyrene foam.
2. Draw the pattern, stone can be any size. TIP: If you are building a wall that is very tall you might want to create perspective by starting with several rows of 10"x18" stones and then 8"x16" rows and 6"x14" stones at the very top. This will make the wall seem taller.
3. Dremel out the grout lines with polishing bits or a Dremel Trio with router bit.



4. Rough up the surface with scoring pads and wire brush, be careful not to gauge through the surface.
5. Use a heatgun to open up the grout lines, taking care not to burn or overheat the foam. This will also create a hard finished surface
6. Paint a black base coat.
7. Paint the grout lines.
8. Use a sponge to create faux stone coloring.



Creating Wood

basics

1. Start with sheets of Pink Extruded Foam.
2. Drag wire brush over foam to create grain and pound in knot holes.
3. Use a heatgun to open up the grain and knot holes, taking care not to burn or overheat the foam. This will also create a hard finished surface.
4. Paint a base coat of black.
5. Paint with medium and light gray or brown to create depth in the wood grain.





Corrosion

basics

1. Take the metal, PVC or wood surface and rough it up with a bit of steel wool.
2. USE GLOVES when working with Great Stuff !
3. This technique works best with two people. First squirt some great stuff in your hands and start to work in onto the surface. At the same time have someone spray paint into the great stuff while you are applying it. Paint does not stick well to great stuff and this will give you a great base color.

